

SMUS Conference Arrival Kit

BANGKOK UNVEILED

ULTIMATE GUIDE TO
AIRPORTS, HOTELS,
AND EXPLORING LOCAL
ATTRACTIONS



SMUS
THAILAND



Chula
Chulalongkorn University

The Global Center of Spatial Methods for Urban Sustainability is funded by the German Academic Exchange Service
- DAAD with funds from the German Federal Ministry of Economic Cooperation (BMZ)



About Bangkok, Thailand

Climate: Tropical monsoon climate

Season: Hot and Rainy Season (July)

Temperature: Ranges from 25°C to 35°C (77°F to 95°F)

Currency: Thai Baht (THB)

Language: Thai

Time Zone: Indochina Time (ICT, UTC+7)

Meals: Street food and local eateries offer affordable options (50 THB to 150 THB per meal). Dining at mid-range restaurants may cost between 200 THB to 800 THB per person.

Transportation: Public transportation is cost-effective. Taxis start at 50 THB, and public buses and trains have low fares. Tuk-tuks may charge negotiable rates.

Attractions: Entrance fees to attractions vary. Some cultural sites may have nominal fees, while others, especially popular tourist spots, may cost more.

Emergency Number: 191 (Police), 1669 (Tourist Police), 1554 (Tourist Assistance Center).



SMUS
THAILAND

SMUS Conference Arrival Kit

BANGKOK



SUARNABHUMI AIRPORT



Main international
airport serving Bangkok



29 KM to Chulalongkorn
University Connected via Airport
Rail Link



Money Exchange
available (SuperRich, Level B)

VISA EXEMPTION

Up to 30 days Visa Exemption*
for these countries:



Scan Here

PASSPORT VALIDITY

Ensure your passport remains
valid for at least six months
beyond your arrival in Thailand
to prevent potential entry issues.

COVID-19 & INSURANCE

No COVID-19 testing is needed
(as of December 2023).

Insurance is not required but
highly recommended and can
be purchased from the airline.

Pre-arrival Checklist

- ☐ PASSPORT (VALID FOR AT LEAST SIX MONTHS*)
- ☐ ACCOMMODATION ADDRESS IN THAILAND
- ☐ RETURN TICKET (PRINTED OR E-COPY)
- ☐ TM6 IMMIGRATION FORM
(will be provided by the Airlines) <https://www.thaiembassy.com/thailand-visa/tm-6-immigration-form-thailand-arrival-and-departure-card>
- ☐ THAI BAHT (THB) CASH
- ☐ ADDITIONAL REQUIREMENTS FOR VISA ON ARRIVAL
<https://www.thaiembassy.com/thailand-visa/visa-on-arrival>

Recommended Applications

E-Hailing Applications



GRAB



BOLT



InDrive

Translator & Navigator Applications



Papago



Google Translate



Google Maps

E-Hailing Applications



Line
(communication)



Exchange Rates
(money exchange)



Klook
(attractions)

GETTING FROM SUVARNABHUMI AIRPORT TO THE CONFERENCE VENUE & HOTEL

Public Taxi



The public taxi stand is located on Level 1 (Ground Level). The taxi-metered fare in Thailand starts from 35 baht with a necessary 50 baht airport surcharge. However, if you take expressway fees from the airport to the hotel, additional toll fees must be paid to the taxi driver. Do not accept any taxi that does not use the metre. The average cost to the conference venue or hotel is 400-1,000 baht.



After your baggage claim, please contact the Taxi counter at Level 1 (Ground Level), near entrances 3, 4, 7 and 8. You will receive a ticket from a taxi queue machine (kiosk). Then proceed to the lane number where the taxi is parked that matches your ticket.

Trains (Airport Rail Link)



Bangkok is connected by trains and it is also convenient to take trains from the airport to the hotel. You are advised to follow these steps.

After your baggage claim, please go to Level B (Basement Level), you will find Airport Rail Link (ARL). A train ticket can be purchased either in person at the ticket counter or the ticket machine. Select Makkasan Station as your destination. The train fare is 35 baht and it takes you 22 minutes to reach Makkasan Station.



Upon reaching Makkasan Station (ARL), transfer to the MRT Petchaburi Blue Line (Platform 1, heading towards Lak Song). Access the 166-meter-long skywalk linking Airport Rail Link Makkasan station to MRT Phetchaburi station. Obtain the MRT card from either the self-service kiosk or the counter, priced at 29 Baht, for travel to Sam Yan station. Upon arrival, exit from Sam Yan station Exit 1 and proceed towards Mandarin Hotel, which is a mere 260 meters away (approximately 3 minutes on foot).



Tourist SIM Card

You can buy a tourist SIM card from any of the three network providers: AIS, DTAC, and True. The price depends on the package plans you select which starts from 299 baht.

Everyone buying a prepaid sim card in Bangkok will have to show any form of photo ID, so bring your passport. Your new Thailand sim card will be registered on your passport number and name and a copy will be taken in the store.

You can find sim card shops at:

Around the baggage claim area: near the luggage belts, around the baggage claim area, you can find sim card shops, the number of shops is up to 10.

At the arrival hall (where you are after picking up your bag and walking through the customs bag check), you can see 3 big counters of 3 popular mobile network operators in Thailand: DTAC, AIS, TrueMove H. Signs "buy your sim card for Thailand here" are everywhere, so do not worry about missing.



TRUE

299 Baht Unlimited 8 Days
699 Baht Unlimited 15 Days



AIS

299 Baht Unlimited 8 Days
449 Baht Unlimited 10 days



DTAC

299 Baht Unlimited 8 Days
599 Baht Unlimited 15 Days

CONFERENCE LOCATION & OFFICIAL HOTEL



คณะรัฐศาสตร์ จุฬาลงกรณ์มหาวิทยาลัย
FACULTY OF POLITICAL SCIENCE CHULALONGKORN UNIVERSITY

BUILDING 3, FACULTY OF POLITICAL SCIENCE,
CHULALONGKORN UNIVERSITY

Kasem Udhayanin Building.

Faculty of Political Science. Chulalongkorn University.
Henri-Dunant Road, Pathumwan, Bangkok, 10330
Walking Distance from MRT Samyan (500M),
BTS Sala Daeng/MRT Silom (800M)



Google Map



MANDARIN HOTEL
since 1965

Mandarin Hotel Bangkok

Mandarin Hotel Bangkok,
managed by Centre Point, 662 Rama IV Rd,
Maha Phruttharam, Bang Rak, Bangkok 10500

Hotel phone number: (+66) 02 238 0230



Google Map

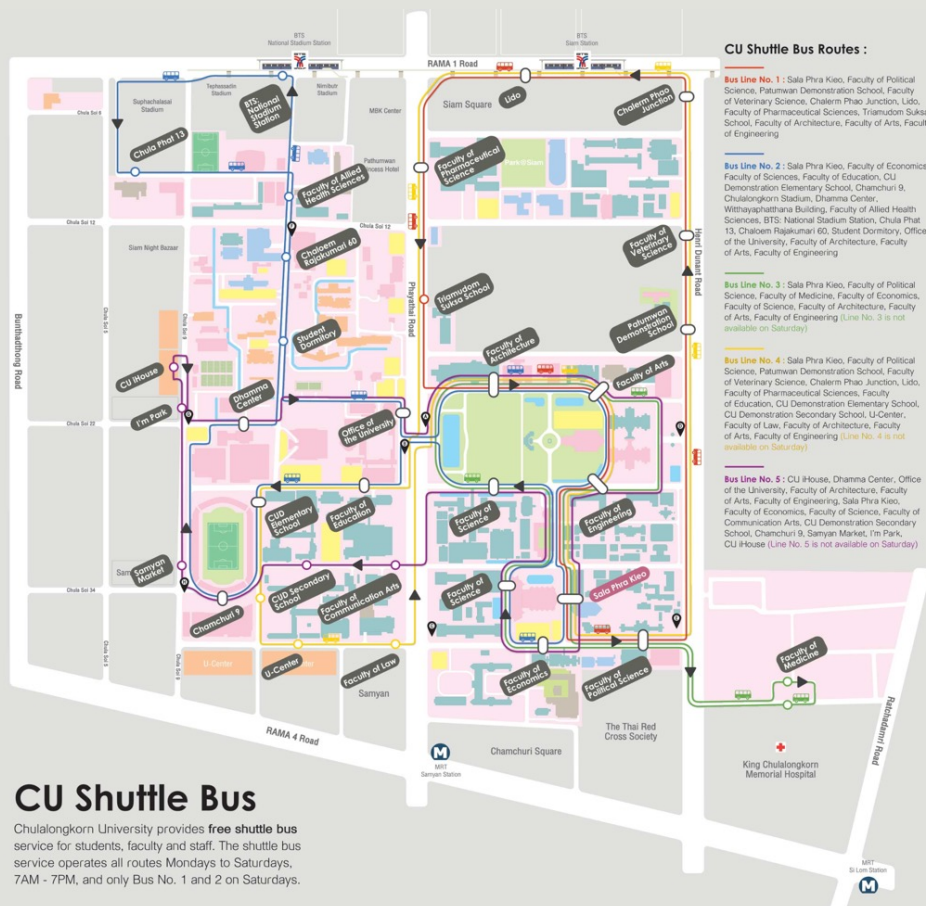


Scan Here
Google Map Link
(Mandarin to Chula)



From Mandarin Hotel, walk to Chamchuri Square via the Chamchuri intersection. Follow Phaya Thai Road alongside Chamchuri Square until you reach the University entrance. Enter the University and continue straight for 450 meters to reach the Faculty of Political Science.

Free Shuttle Bus



The main bus stop (Sala Phra Kleo) is just 200 meters away from the Conference Venue.

You can take Bus
Number 3 or Number
4 to Siam Square
(shopping district)
or to BTS Siam.

For more information:

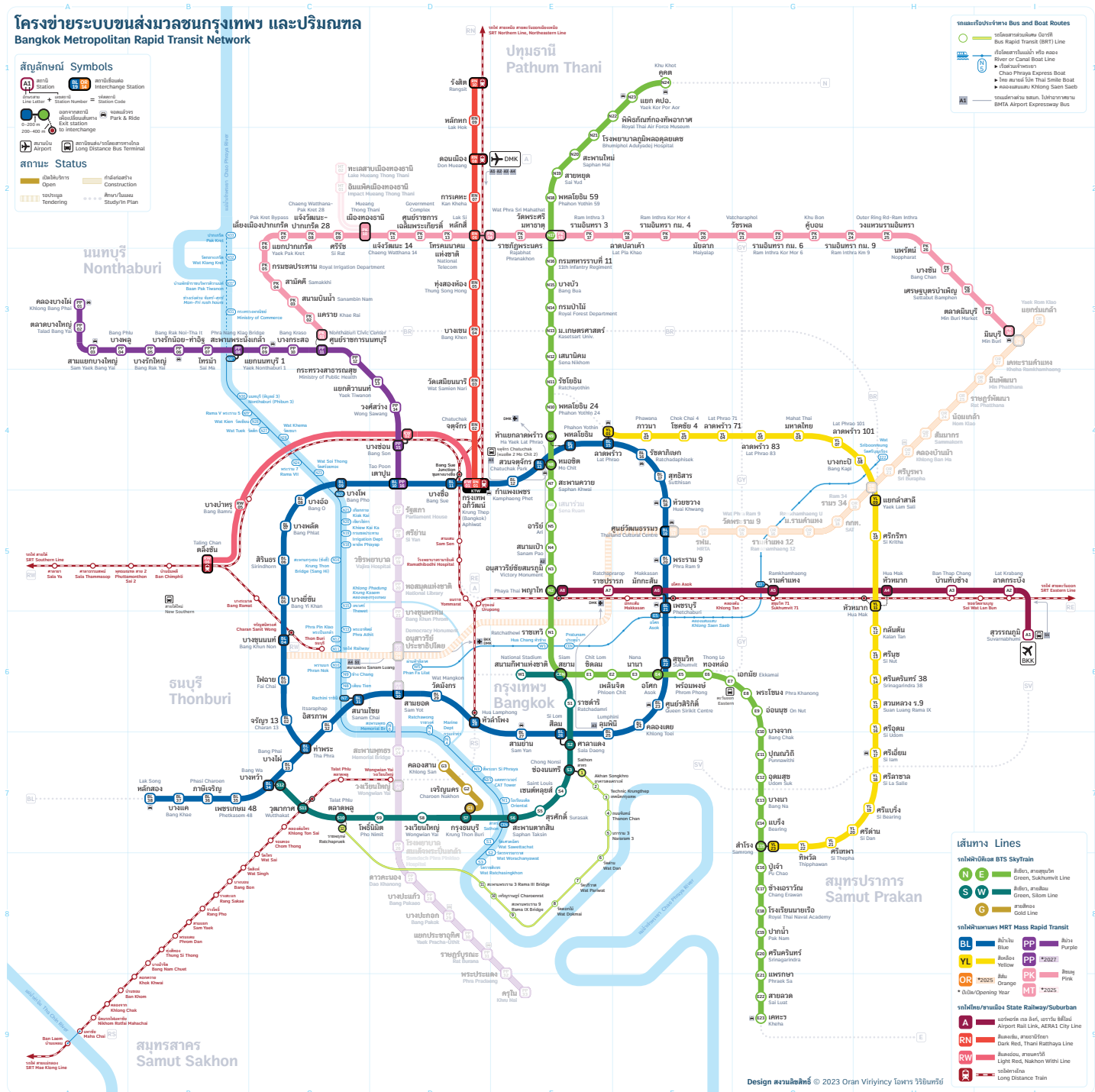




SMUS
THAILAND

SMUS Conference Arrival Kit

Bangkok BTS and MRT Map 2024

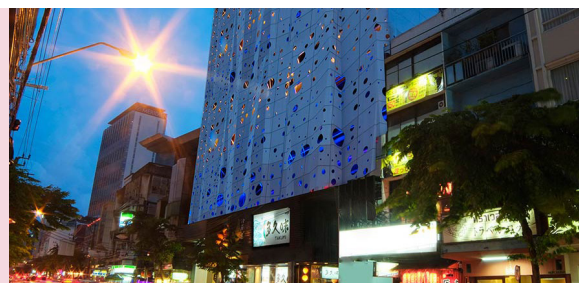


ACCOMMODATION RECOMMENDATIONS



Mandarin Hotel Bangkok (Official Conference Hotel)

DISTANCE TO CONFERENCE VENUE: 900 Metres
AVERAGE COST PER NIGHT: 2,900 Baht~80 USD~
BREAKFAST: Included
OFFICIAL WEBSITE: <https://www.mandarin-bkk.com>



The Raya Surawong Bangkok Hotel

DISTANCE TO CONFERENCE VENUE: 600 Metres
AVERAGE COST PER NIGHT: 1,700 Baht~50 USD~
BREAKFAST: Included
OFFICIAL WEBSITE: <https://therayabangkok.com/>



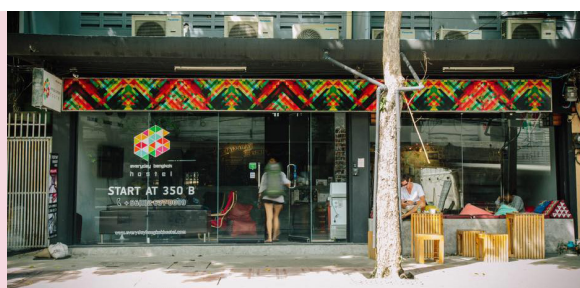
Sam Yan Serene Hotel

DISTANCE TO CONFERENCE VENUE: 900 Metres
AVERAGE COST PER NIGHT: 1,700 Baht~50 USD~
BREAKFAST: Included
OFFICIAL WEBSITE: <https://www.samyanserenehotel.com/>



Pula SilomHotel

DISTANCE TO CONFERENCE VENUE: 950 Metres
AVERAGE COST PER NIGHT: 1,500 Baht~44 USD~
BREAKFAST: Not Included
OFFICIAL WEBSITE: <https://www.facebook.com/pula>



Everyday Bangkok Hostel

DISTANCE TO CONFERENCE VENUE: 1 KM
AVERAGE COST PER NIGHT: 350 Baht~10 USD~
BREAKFAST: Not Included
OFFICIAL WEBSITE: <https://www.everydaybangkokhostel.com/>



Triple Y Hotel Samyan

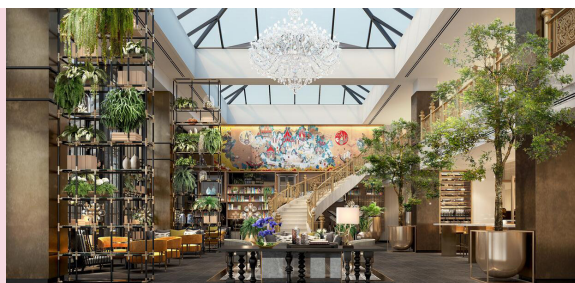
DISTANCE TO CONFERENCE VENUE: 650 Metres
AVERAGE COST PER NIGHT: 3,000 Baht~85 USD~
BREAKFAST: Included
OFFICIAL WEBSITE: <https://www.triplehotel.com/>

ACCOMMODATION RECOMMENDATIONS



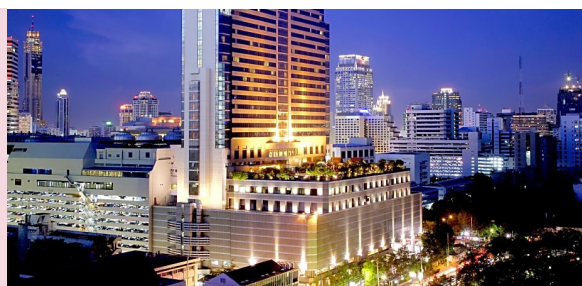
Dusit D2 Samyan Hotel

DISTANCE TO CONFERENCE VENUE: 1.4 KM
AVERAGE COST PER NIGHT: 5,000 Baht~140 USD~
BREAKFAST: Included
OFFICIAL WEBSITE: www.dusit.com/dusitd2-samyanbangkok/



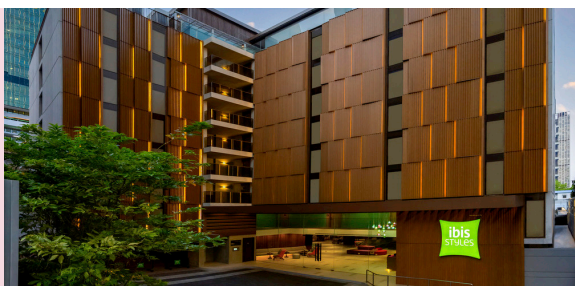
Montien Hotel Surawong

DISTANCE TO CONFERENCE VENUE: 850 Metres
AVERAGE COST PER NIGHT: 3,900 Baht~110 USD~
BREAKFAST: Included
OFFICIAL WEBSITE: <https://montienbangkok.com/>



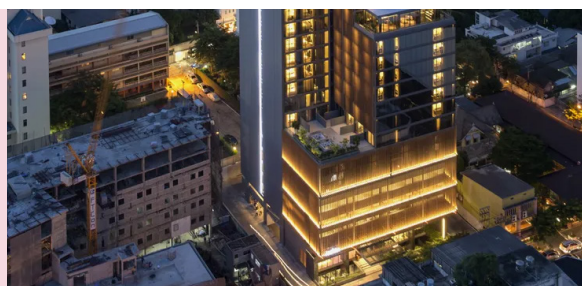
Pathumwan Princess Hotel

DISTANCE TO CONFERENCE VENUE: 1.5 KM
AVERAGE COST PER NIGHT: 6,000 Baht~170 USD~
BREAKFAST: Included
OFFICIAL WEBSITE: <https://www.pprincess.com>



Ibis Styles Bangkok Silom

DISTANCE TO CONFERENCE VENUE: 1.3 KM
AVERAGE COST PER NIGHT: 3,300 Baht~93 USD~
BREAKFAST: Included
OFFICIAL WEBSITE: www.ibisstylesbangkoksilom.com/th/



Amara Hotel

DISTANCE TO CONFERENCE VENUE: 1.3 KM
AVERAGE COST PER NIGHT: 4,000 Baht~100 USD~
BREAKFAST: Included
OFFICIAL WEBSITE: <https://bangkok.amarahotels.com/>



Red Planet Bangkok Surawong

DISTANCE TO CONFERENCE VENUE: 1.2 KM
AVERAGE COST PER NIGHT: 1,500 Baht~44 USD~
BREAKFAST: Included
OFFICIAL WEBSITE: www.redplanethotels.com

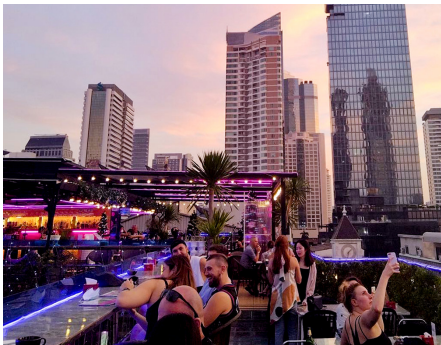


NEARBY EATERIES AND BARS



RESTAURANTS

- Inter Restaurants
- KubKao' KubPla
- Panda King
- Ban Khun Mae



BARS

- Throwback.bkk
- Buddy's Bar and Grill
- Nineteens Up Bar
- Sky Bar
- Heaven Rooftop Bar and Lounge
- Dj Station (LGBTQ friendly)



LOCAL VENDORS

- Banthat Thong Road
- Chinatown Yaowarat Road (MRT Wat Mangkon)
- Jodd Fairs Rama 9



HALAL/VEGETARIAN

- Yana Restaurant MBK Center
- Nuatair Samyan Mitrtown
- Vegie House Tonklarfai
- More Halal/Vegetarian options in Ratchatewi and Pratunam



SAMYAN MITRTOWN (Shopping Complex)

B1 Floor	<ul style="list-style-type: none"> - Money Exchange - Printing Service - MRT Samyan walkway - Big C Groceries - Laundry Service
2nd Floor	<ul style="list-style-type: none"> - Gym Celebrity Fitness (walk in available) - ASEAN CO-Working Space (registration required) - IT Services
4th Floor	<ul style="list-style-type: none"> - Food Court by MBK Legends

Located 10 minutes walk
from Conference Venue (800 metres)

More information:
<https://www.samyan-mitrtown.com/en/>

LOCAL ATTRACTIONS

- Chulalongkorn University Museums
- The Grand Palace
- Bangkok Art and Culture Centre
- Siam Square (Shopping district)
- Asiatique the Riverfront
- Wat Arun, Wat Saket, Wat Traimit (Temples)

- Chatuchak Weekend Market
- Jim Thompson House Museum
- Chao Phraya Cruise
- Lumpini Park
- The Bangkok National Museum
- Erawan Shrine

MEDICAL PROVIDER (English Language Services Available)



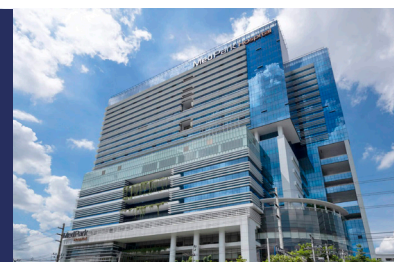
BNH Hospital

Address: 9/1 Convent Rd, Silom, Bang Rak, Bangkok 10500
Tel: 02 022 0700
Website: www.bnhhospital.com/



The Bangkok Christian Hospital

Address: 124 Si Lom Rd, Suriya Wong, Bang Rak, Bangkok 10500
Tel: 02 625 9000
Website: www.bch.in.th/



MedPark Hospital

Address: 3333 Rama IV Rd, Khlong Toei, Bangkok 10110
Tel: 02 023 3333
Website: www.medparkhospital.com/



ETHNOGRAPHIC SELF-EXPLORATIONS

2 August 2024

Overview

1. STREET FOOD SANCTUARY:

Delve into the vibrant culinary landscape of Bangkok as you explore bustling street markets and hidden culinary gems. Engage with local vendors, savour authentic flavours, and gain insights into the sustainable practices shaping Thailand's culinary traditions.

2. BANGKOK'S SOI:

Wander through the labyrinthine alleys and vibrant neighbourhoods of Bangkok's iconic Soi streets. Immerse yourself in the eclectic mix of art, culture, and community initiatives flourishing in these dynamic urban spaces, and discover the innovative sustainability projects driving positive change at the grassroots level.

3. CITY CULTURAL HERITAGE:

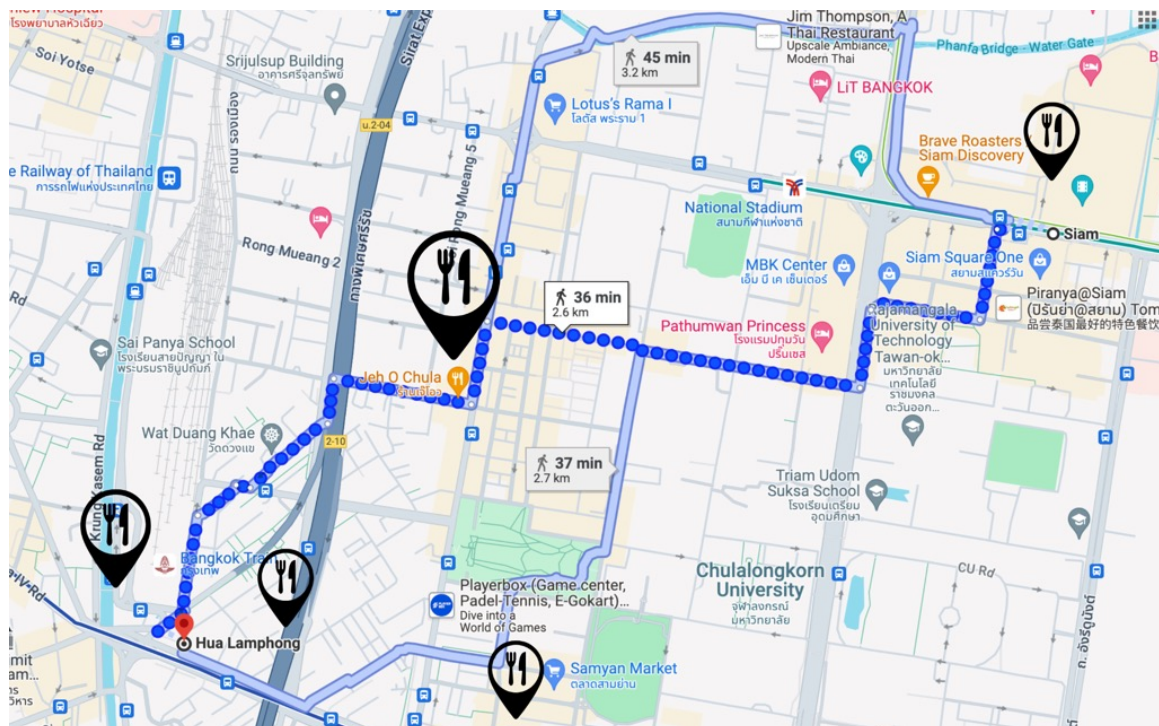
Uncover the storied past and architectural marvels of Bangkok's cultural heritage sites. From ornate temples to regional museums, trace the city's illustrious history through its iconic landmarks and cultural landmarks, and discover how efforts to preserve and promote these heritage sites are integral to fostering sustainable tourism and community development.

4. SIAM WINDOW SHOPPING:

Immerse yourself in Bangkok's bustling shopping hub, Siam, where every need is met. From souvenirs to savoury treats, indulge in retail therapy and splurge your Thai Bahts while you're still in town!

STREET FOOD SANCTUARY

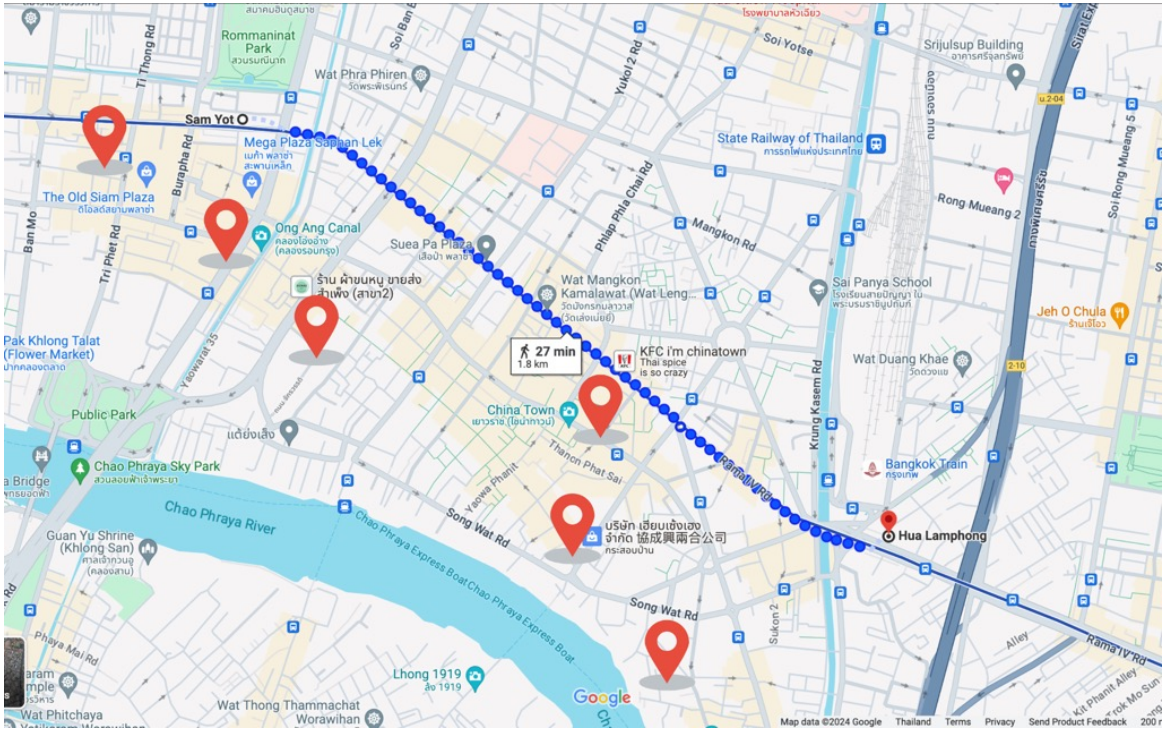
Eatery	Location	Recommended Food	Cost (THB)	Transport
Breakfast				
Jae Hmoy Kia Pork Porridge 猪肉粥	Yaowarat (Chinatown)	Pork Porridge	60~	MRT Hua Lamphong
Pae Sia Dimsum	Yaowarat (Chinatown)	DimSum	35~	MRT Hua Lamphong
Lunch				
Inter Restaurants since 1981	Siam Square	Thai Food	150~	BTS Siam
Afternoon Dessert				
Jae Wan	Bantadthong Road	Iced Dessert	80~	BTS National Stadium/Bus
Dinner				
Chula 50 Kitchen	Samyan	Crab Fried Rice	80~	MRT Samyan





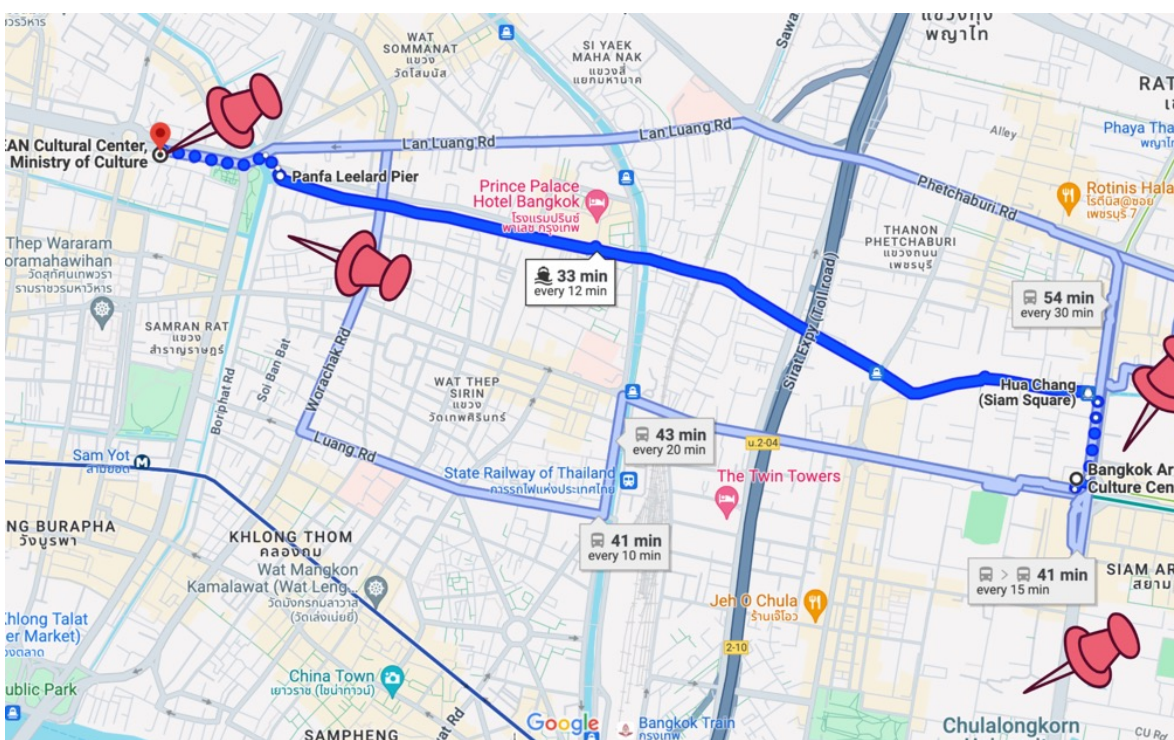
BANGKOK’S SOI

Location	Recommended Visit	Transport
Morning		
Talat Noi	Sol Heng Tai	MRT Hua Lamphong
	Soi Charoen Krung 22	
	Holy Rosary Church	
	Siam Commercial Bank (1906)	
	Yaowarat Chinatown Heritage Centre	
Afternoon		
Khlong Ong Ang	Sampeng Market	MRT Sam Yot
	Chakrawat Rachawat Woramahawihan Temple (Sam Pluem Temple)	
	Saphan Han Bridge	
	Ong Ang Canal	
	Chinese Lantern Alley	



CITY CULTURAL HERITAGE

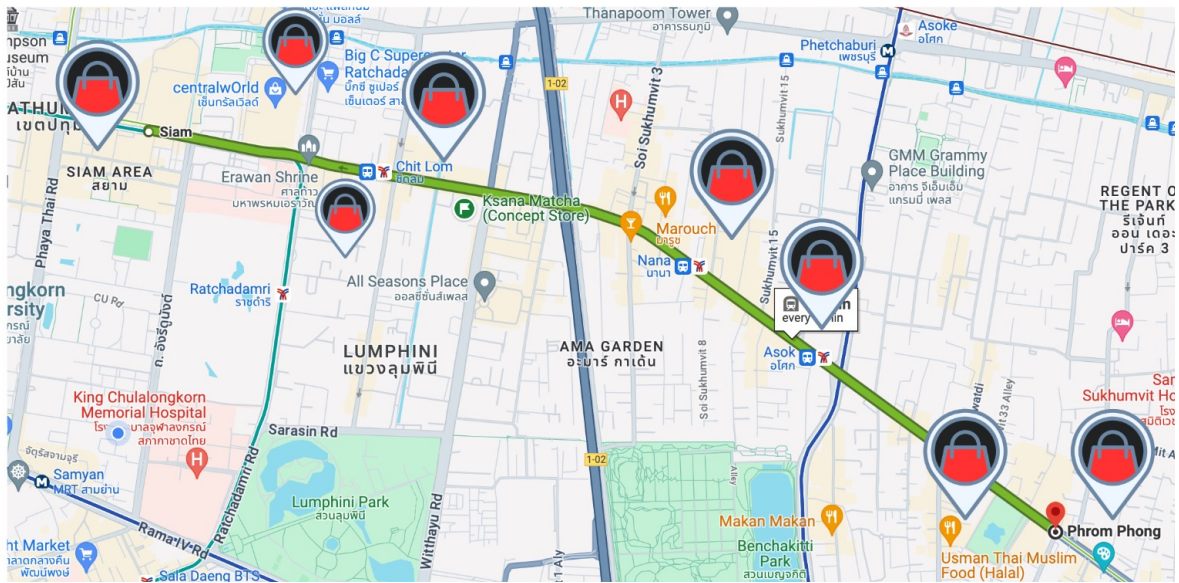
Location	Estimated Cost (THB)	Transport
Morning		
<ul style="list-style-type: none">CU MuseumThai House of CUOffice of Art and Culture CU	Free	CU Pink Bus
Bangkok Art and Culture Centre	Free	
Afternoon		
ASEAN Cultural Centre	Free	Hua Chang Pier > Panda Leelard Pier
Rattanakosin Exhibition Hall	100	
Mahakan Fort Park	Free	
Wat Saket Golden Mount	50	





SIAM WINDOW SHOPPING

Location	Estimated Cost (THB)	Transport
Morning		
● MBK Centre	Free	CU Pink Bus
● SIAM DISCOVERY, SIAM CENTER, SIAM PARAGON	Free	
● SIAM SQUARE		
Afternoon		
● CENTRAL WORLD	Free	BTS to Phrom Pong
● BIG C	Free	
● Emsphere, EmQuartier, and EmPorium	Free	





CHULA Zero Waste



The SMUS Conference 2024 is proud to support **Chulalongkorn University's Zero Waste program** by actively reducing the use of single-use plastics, particularly plastic cups and tubes.

As part of our commitment to sustainability, **we kindly request that all conference attendees bring their own reusable water bottles.**

To ensure your comfort and convenience throughout the event, we will provide filtered water stations located within and near the conference venue. These stations will allow you to easily refill your water bottle, minimizing the need for disposable plastics.

By bringing your own water bottle, you will be directly contributing to the university's efforts to reduce waste and promote environmentally friendly practices.

We appreciate your cooperation and look forward to your participation in the SMUS Conference 2024.

We Wish You a Safe and Comfortable Journey!

See you at SMUS Conference 2024



SMUS
THAILAND



The Global Center of Spatial Methods for Urban Sustainability is funded by the German Academic Exchange Service
- DAAD with funds from the German Federal Ministry of Economic Cooperation (BMZ)