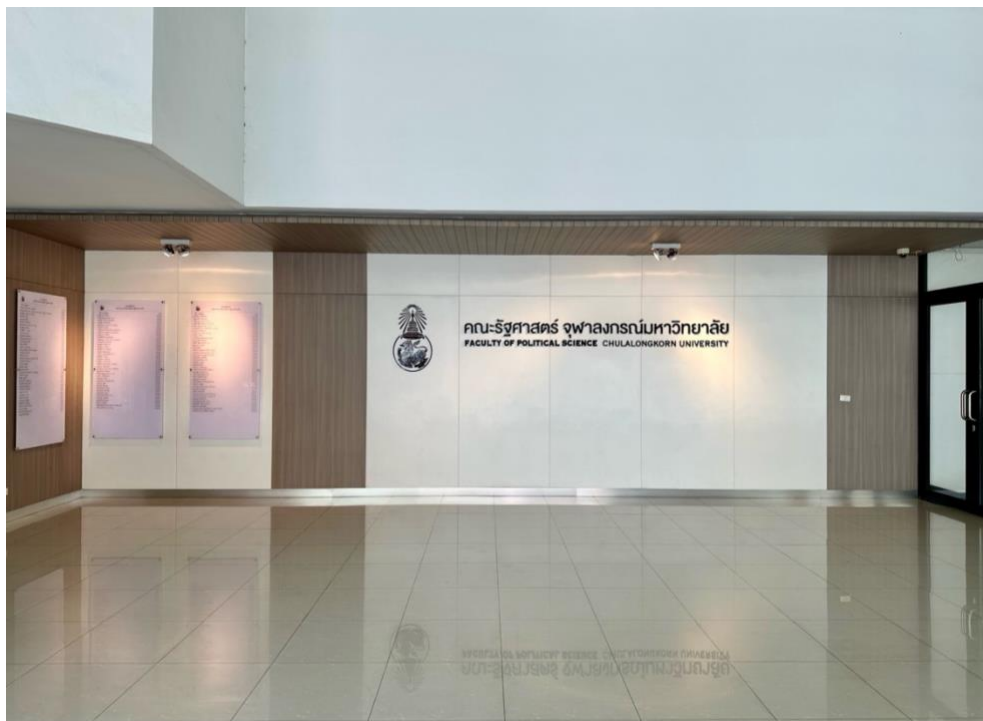


**SMUS Conference 2024 Venue**  
Faculty of Political Science, Chulalongkorn University  
Bangkok Thailand



**SMUS**  
THAILAND

**Main Building Entrance and Ground Floor (Floor 1)**



**Plenary Hall** (Floor 13, Maximum Capacity 300 Pax)





**Plenary Hall Lobby** (Floor 13, For Lunch Maximum Capacity 150 Pax)

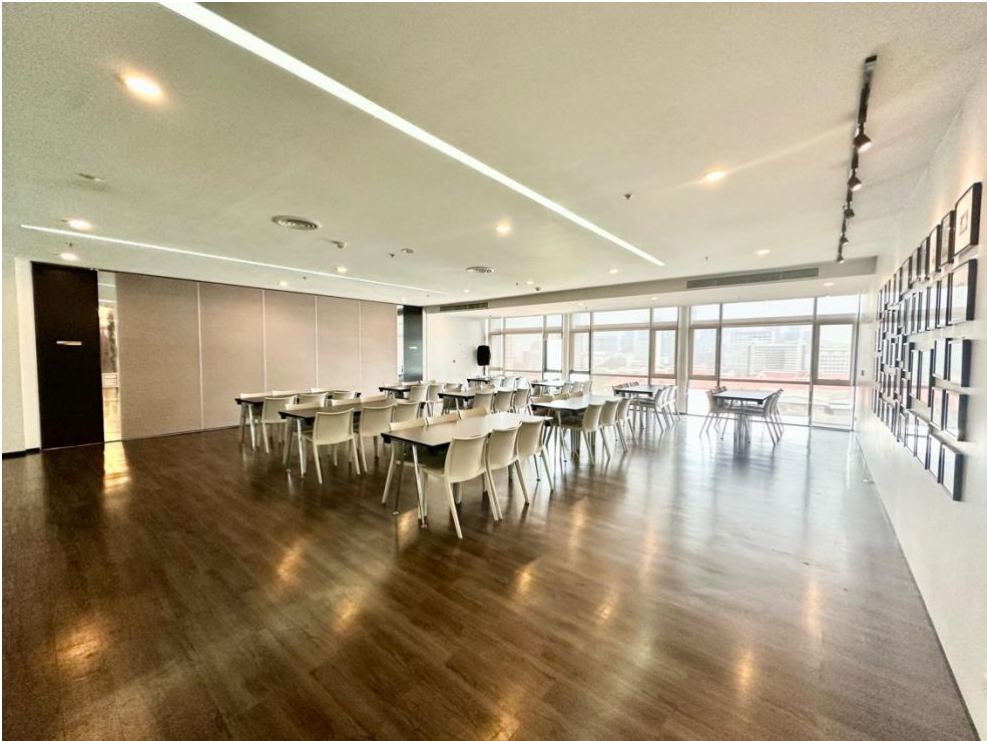


**SMUS General Assembly** (Floor 12, Maximum Capacity 50 Pax)





Action Showcase Area (Floor 12 in front of Assembly Meeting Room) Option A



Action Showcase Area (Floor 7) Option B





Lunch and Coffee Break Area (Floor 12 and Floor 5)



**Session Rooms** (Floor 5-6, Maximum Capacity 80 Pax)





**Co-working Space** (Floor 4, Maximum Capacity 120 Pax)





Reception Dinner (Lawn in front of the main buidling)







The SMUS Conference 2024 is proud to support **Chulalongkorn University's Zero Waste program** by actively reducing the use of single-use plastics, particularly plastic cups and tubes.

As part of our commitment to sustainability, **we kindly request that all conference attendees bring their own reusable water bottles.**

To ensure your comfort and convenience throughout the event, we will provide filtered water stations located within and near the conference venue. These stations will allow you to easily refill your water bottle, minimizing the need for disposable plastics.

By bringing your own water bottle, you will be directly contributing to the university's efforts to reduce waste and promote environmentally friendly practices.

We appreciate your cooperation and look forward to your participation in the SMUS Conference 2024.