

Zine by Sinakhokonke Zulu



Deutscher Akademischer Austauschdienst
German Academic Exchange Service

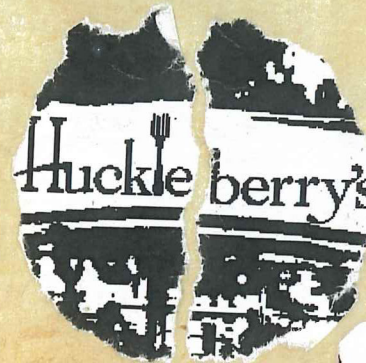
S
O
C
I
A
L



INFRASTRUCTURE

IN

SOUTH AFRICA



THE HISTORY



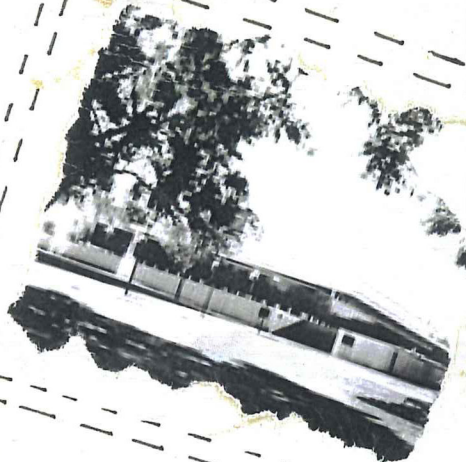
The Pretoria Art Museum, opened in 1964,

home

South African art, reflecting the

nation's journey of identity, healing, and

transformation.



Nestled at

Huckleberry's has long been

hub where families, friends

strangers gather over food, la

and the park's calm at

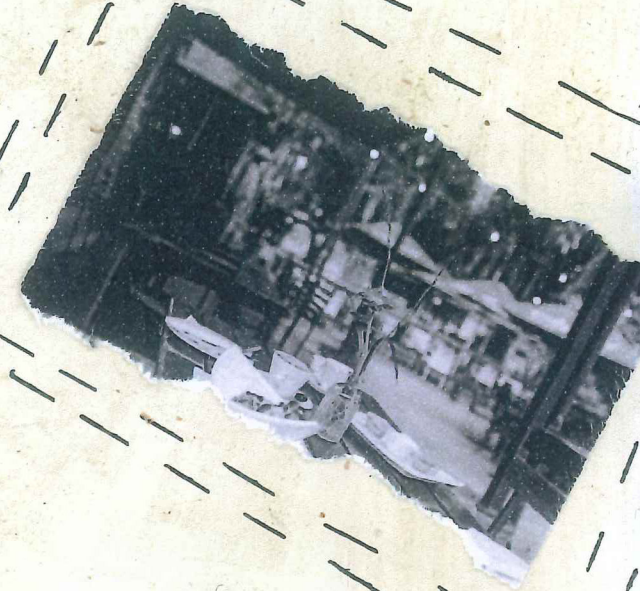
Magnolia De

in a social

and

ughter,

nosphere.



South Africa must bloom like

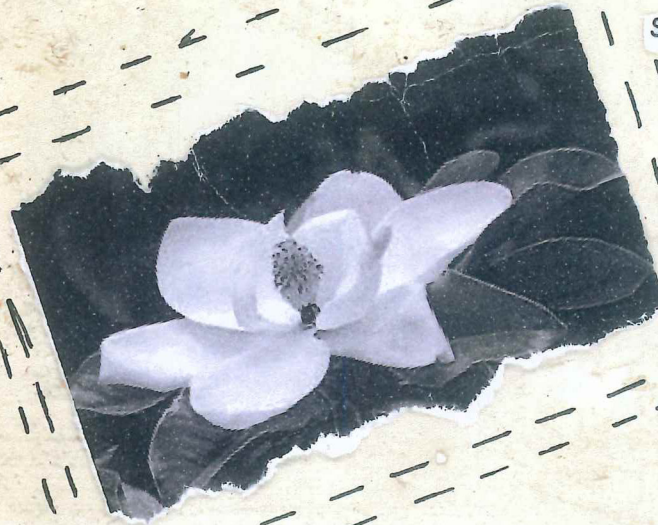
the Magnolia, breaking from

apartheid's past by building

social infrastructure that heals,

transforms, and strengthens our

democracy.





"Policies for People;
Spaces for Healing"



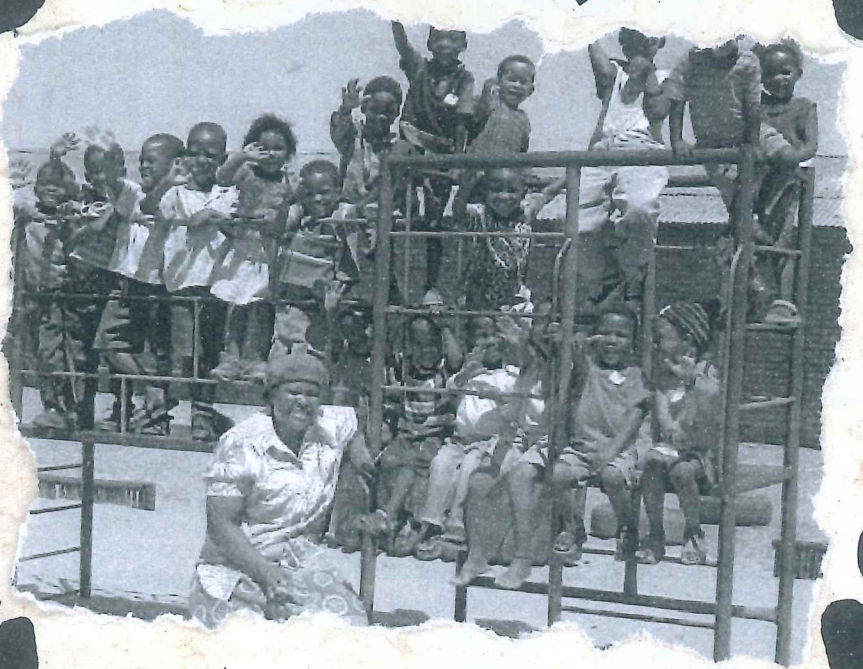




From Magnolia Dell Park along Queen Wilhelmina Avenue to the Pretoria Art Museum in Arcadia Park near the Union Buildings, these spaces form the heart of Pretoria's cultural and social life.



FOR THE PEOPLE





THE END.

For more information please contact:

Dr Kundani Makakavhule

Senior Lecturer: Department of Town and Regional Planning

Research Committee Chairperson and Coordinator

Programme Coordinator: Masters Town and Regional Planning Coursework

Tel +27 (0)12 420 4180

Email kundani.makakavhule@up.ac.za

www.up.ac.za

Faculty of Engineering, Built Environment and Information Technology

Room 1-6, Building 8, South Campus

University of Pretoria, Private Bag X20

Hatfield 0028, South Africa



Deutscher Akademischer Austauschdienst
German Academic Exchange Service